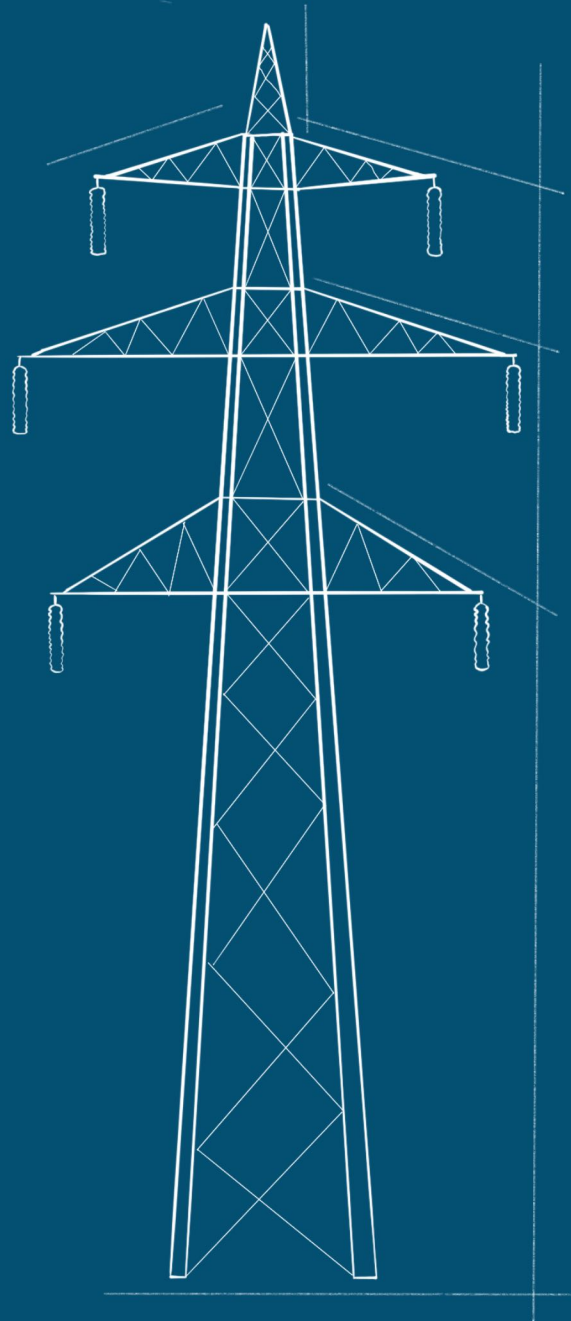




**Sales Outsource
Solutions**

Power Transmission Solutions



**Sales Outsource
Solutions**

1. PowerGuard HDPE Conduit

PowerGuard is listed to CSA C22.2. PowerGuard is designed to perform in Electrical applications eliminating joints and elbows with continuous flexible lengths.

2. Cable in Conduit

With Cable-in-Conduit (CIC), the cable of your choice is factory preinstalled allowing for one-step placement of conduit and cable.

3. Exothermic Welding Kit

PowerGuard is listed to CSA C22.2. PowerGuard is designed to perform in Electrical applications eliminating joints and elbows with continuous flexible lengths.

4. Exothermic Welding Drone

With Cable-in-Conduit (CIC), the cable of your choice is factory preinstalled allowing for one-step placement of conduit and cable.

5. Tri-View Marking Posts

The TriView® is the industry's best marker for creating awareness of buried facilities and reminding excavators to call before they dig.

6. Hideout Ground Marking

HideOut™ provides easy access to tracer wire in spots where upright posts are not practical.

7. Buried Cable Warning Signs

Rhino UV Armor gives them superior endurance against breaking, cracking or significant fading due to environmental effects. Unlimited colors and unlimited shapes with no extra charges.

8. Power Transformation Units

cETLus listed for U.S. and Canada. Frame is easy to move, narrow frame fits through a standard 36" doorway. Industrial duty aluminum frame with lifting eyes.

9. Power Distribution Units

cETus listed for use in U.S. and Canada. UL943-5th Edition Self-Testing GFCI Module with Nema 4x Test/Resent Buttons For Exceptional Damp/Wet Areas performance.

10. Insulated Hand Tools

These tools are made of heat treated chrome vanadium steel for maximum strength and durability. The tools meet or exceed IEC 60900, ASTM F1505-01, and VDE standards for high voltage protection and are tested to 10,000 VAC and rated to 1,000 VAC live use.