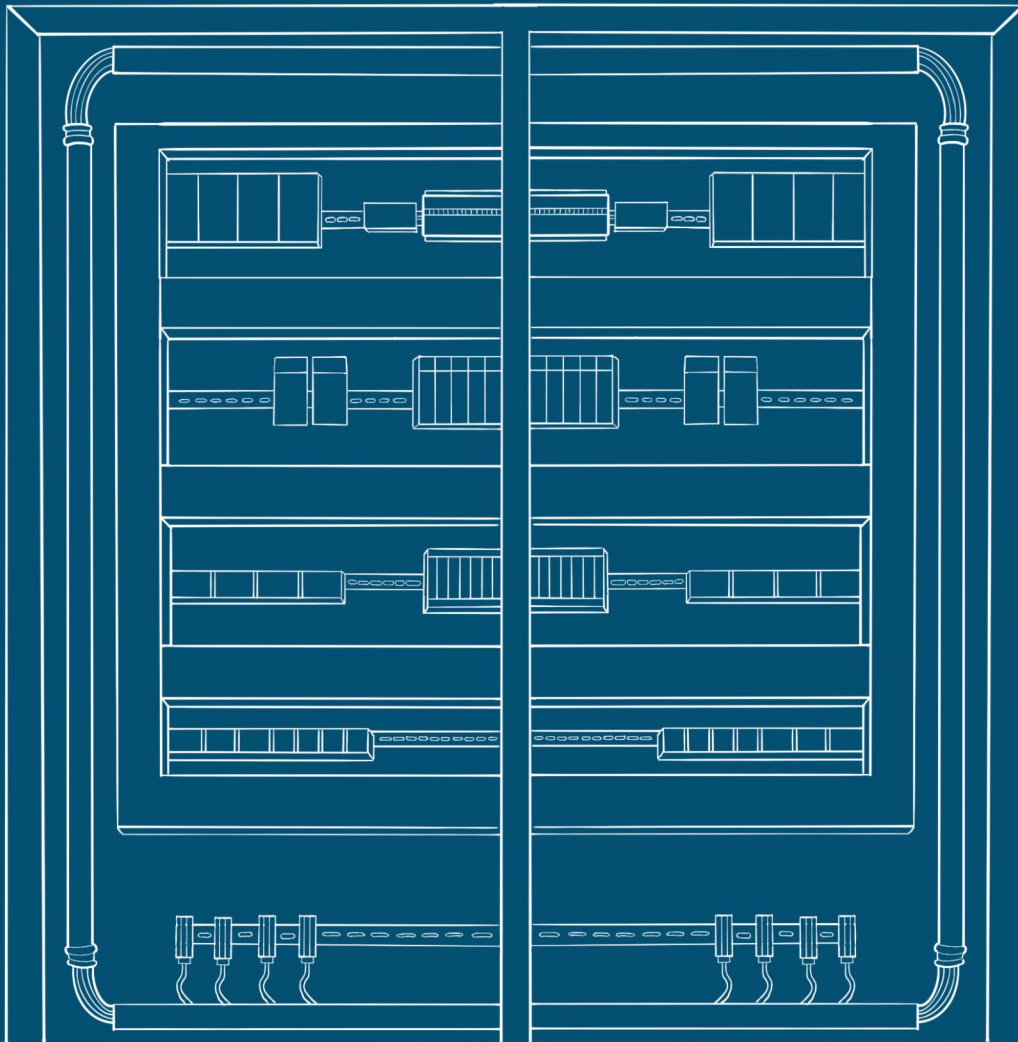




**Sales Outsource  
Solutions**

**Industrial Control  
Panel Solutions**



**Sales Outsource  
Solutions**

## 1. Nylon Cable Ties **PANDUIT**

Panduit Locking Cable Ties are designed to satisfy the needs of general applications, while delivering consistent performance and reliability.

## 2. Steel Cable Ties **PANDUIT**

The ultimate in wire & cable bundling, fastening, identification and installation solutions for demanding indoor and outdoor environments.

## 3. Wiring Duct & Covers **PANDUIT**

Panduit PVC Narrow Slot Wiring Duct features a narrow slot/finger design that closely matches spacing of high-density components. Upper and lower scorelines allow for easy finger/sidewall section removal.

## 4. Lockout Tagout Kits **PANDUIT**

Panduit Lockout/ Tagout kits keep employees safe by making panels/circuits/valves and more inoperable. Coming in different packages depending on application.

## 5. Verisafe 2.0 **PANDUIT**

VeriSafe Absence of Voltage Testers test for the absence of voltage with the push of a button. VeriSafe meet NFPA 70E and CSA Z462\* best practice for testing absence of voltage.

## 6. Cable Entry Systems **PANDUIT**

The Cable Entry Systems offer a safe, organized method to transition cable and hoses through enclosures and electrical equipment.

## 7. Mobile Printing & Labelling **PANDUIT**

Mobile Printer prints continuous labels and features an automatic cutter. The ultimate in flexibility with USB, Bluetooth, and mobile app connectivity.

## 8. Panel Max Duct **PANDUIT**

PanelMax™ DIN Rail Wiring Duct is an innovative wire management solution that maximizes space utilization within industrial enclosures for flexibility in panel.

## 9. Heat Shrink Tubing **PANDUIT**

Panduit Thin Wall Heat Shrink Tubing shrinks around wires, connectors, joints, and terminals when heated to protect against abrasion.

## 10. Universal Ground Bar **PANDUIT**

Provides a field wiring terminal for the connection of an equipment grounding conductor in each control panel and enclosure.

## 11. Bonding Straps **PANDUIT**

Braided Bonding Strap is designed to electrically bond enclosure doors, motors, and machine frames to construct control panels.

## 12. Molded Case Circuit Breakers **NOARK**

## 13. Miniature Circuit Breakers **NOARK**

## 14. Power Circuit Breakers **NOARK**

## 15. Motor Overload Protection **NOARK**

## 16. Manual Motor Starters **NOARK**

## 17. Indicating Lights **NOARK**

## 18. Selector Switches **NOARK**

## 19. Thermostats ARIELTECH

The TTEC series are thermostat controllers used to regulate the temperature inside industrial control panels or cabinets and control cabinet accessories.

## 20. Hygrostats ARIELTECH

The HYTEC-100 is designed to control the relative humidity inside of enclosures and electrical panels. The HYTEC-100 starts the heater in order to avoid formation of condensation in enclosures.

## 21. Fan Filters & Exhaust Fans ARIELTECH

FTEC series Fan Filter and Exhaust Filter are designed to supply forced convection filtered air for enclosures and electrical panels.

## 22. Thermoelectric Cooling Units ARIELTECH

Thermoelectric Cooling Units are used for the most demanding industries such as industrial and electronic enclosures, medical equipment, laboratory instruments, aerospace, & semiconductors.

## 23. Heaters ARIELTECH

Heater provides protection from condensation and low temperatures in Control Panels, Electronic Enclosures, Hydraulic and Pneumatic machinery.

## 24. Axial Fans ARIELTECH

FANTEC series Axial Fans are designed to supply forced convection air to enclosures and electrical panels. By using the unique cooling features, FANTECs will cool down the inside of enclosures to a desired temperature